

## Manufacturer of LED Operating Lights & Tables



# About

## SUMIT SURGICAL INDUSTRIES

**SUMIT SURGICAL** is one of the specialized manufacturer of LED Surgical Lights & Operating Tables. Our Firm is working under our renowned Brand SUMIT SURGICAL

**SUMIT SUGICAL's** Surgical Lamps & Surgical Tables are inspired by the Mission MAKE IN INDIA of Honorable Prime Minister Mr. Narendra Modi. Company's registered office at DSIIDC Bawana Industrial Area, Delhi. Our products have acquired the biggest part in Indian market. We are the leading suppliers to many medical institutions, Government Sectors, Hospitals, nursing homes, traders in India and other countries as well In overseas market, our product is highly demanded .To ensure the product quality, production on base in strict accordance with **ISO 9001 : 2008, ISO 13485 : 2003, WHO / GMP, CE.**

**SUMIT SURGICAL** is an exporter also & now looking forward to expand its horizons to global market. To accomplish our target, our Export house is working day & night. In just a small duration, **SUMIT SURGICAL** is now working with more than 150 workers, 4 factories & a separate sales team More than 2000 distributors in all over India, approx.8000 installation on in Indian market only.

**SUMIT SURGICAL** insists on the Motto of **"QUALITY CREATES BRAND SERVICE CREATES FUTURE"** We have our own Testing Lab in our factory, where our quality control experts ensure the quality of products with high quality testing equipments.

Each & every unit has to clear this process to ensure the quality.Our Marketing team regularly participating in National & International Exhibitions, so that we can understand the customer requirements.

Our Research & development team is contiuously working to design the unique models with all technical solution to meet the comfort of clients. We committed to provide you high class products with our excellent services at each & every place.



**Quality Creates Brand, Service Creates Future....**

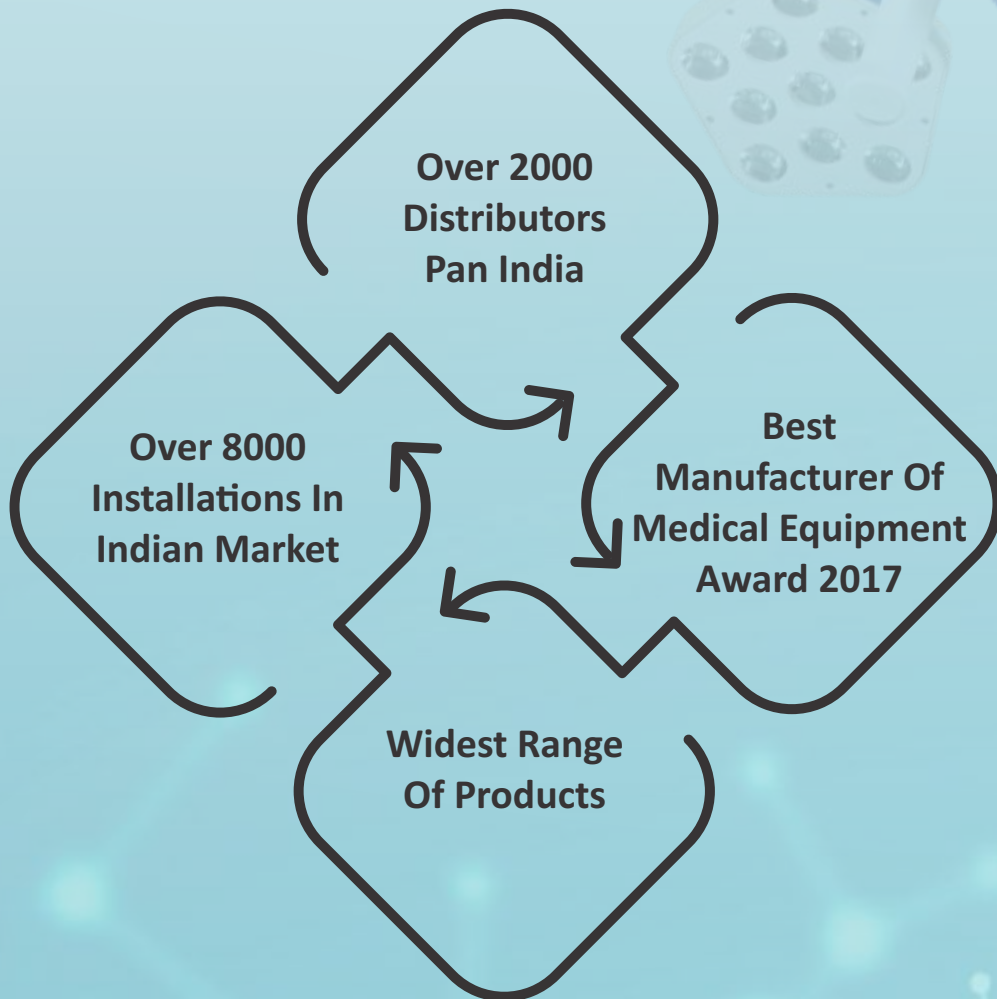


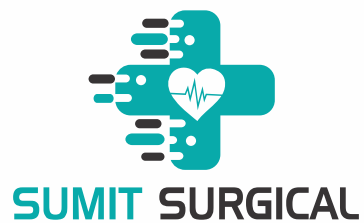




**SUMIT SURGICAL**

**LIGHTING THE FUTURE**





Light and good Vision is natural for all of us. Therefore it is natural for us that we enter the latest trends and findings into the development of innovative lighting concepts. Reliable lighting solutions are particularly important in health care.

### QUALITY

Rely on high - quality materials and precise workmanship.

### DESIGN

Experience light in a timeless, modern form.

### INNOVATION

Benefit from intelligent lighting and forward-looking technologies.



## UNRIVALED FEATURES OF SUMIT SURGICAL LED'S



### **Touch Free Intensity Control**

SUMIT SURGICAL Provides you some latest & high technology services with our OT Light. We provide Proximity sensor in our OT Lamps. Proximity sensor is able to detect the nearby hand without any physical touch. During the surgery procedures, proximity sensor is very useful to surgeons. It is so easy to use, that even the untrained staff can also use this. In this feature, one can increase & decrease the intensity/colour temp. by their hand movements only. Not important to touch the remote or control panel.

### **Wireless Wall Control Panel**

SUMIT SURGICAL LED's have wall control system also The special thing about this control panel is that, this panel is completely wireless. You can fix this control panel on OT wall. This system is able to work up to the distance of 100 mtr. All the features of OT light can be control by this panel.



### **Touch Free Intensity Control**

SUMIT SURGICAL LED's are made of an aluminium alloy, with outstanding heat dissipation capacity, which extends the LED elements working life and illuminating efficiency Aluminium is a powerful & efficient heat absorber





SUMIT SURGICAL









# LED SURGICAL





# LIGHTS

Being a revolutionary interface, we make the surgeons able to view in a different range of Light Intensity as per their need.

# SURGICAL LAMP

SUMIT SURGICAL offers highest intensity operating light. SSI-701 has medical Grade led's to provide surgeons a clear and accurate View of anatomical structures during surgery . SSI-701 has large size optics, which ensures direct illuminations for deep cavity operations.

## **SUMIT SURGICAL LED's**

Provide natural light to ensure the comfort & relax of patients Our LEDs make a good environment, so that surgeon can examine blood, organs in the actual colours.

## **Protection Glass**

Using high quality poly carbonate to ensure:-

- The safety of LEDs from dirt
- Maximize light clarity
- Scratch proof
- Protective glass



## **Advanced Touch Panel**

SUMIT SURGICAL has developed new & unique featured Touch Panel.

## **Aluminium Enclosure**

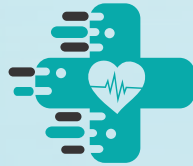
Our Lights are made of an aluminium alloy, with outstanding heat dissipation capacity, which extends the LED elements working life and illuminating efficiency.

## **High Definitions Optical System**

Our Flare has high definitions optic system, which ensures direct illuminations for the deep cavity operations. It gives high intensity light to control, the shadow.







**SUMIT SURGICAL**

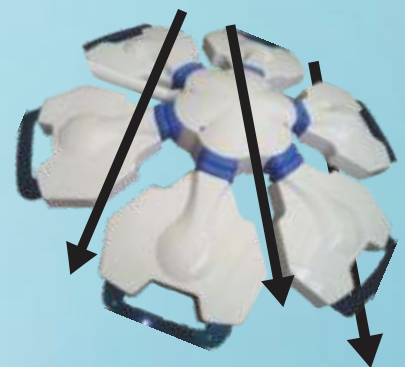
## **PERFECT ENDO MODE FOR REQUIREMENT OF AMBIENT ILLUMINATION**



**Surgical Mode**



**Light Focus**



**Air Flow**



**Endo Mode**

Adjustable color temperature (3,800K - 4,800K)  
help surgeons to view accurate colour of  
organs & blood



3,800K

4,300K

4,800K

**Color Temperature  
Adjustment**

## SURGICAL LAMP



We are using our most advanced technology in OT Lamps i.e. Highest intensity, digital touch panel integrated with high definition optical system OT Lamp is a revolutionary product in surgical lighting division. The streamlined shape minimize disruption of laminar airflow in the operation theatre, and the light weight of the lamp enables easy setting of the lamp and its stable positioning.



**SSI-701**  
**LED : 84**  
**INTENSITY : 2,00,000 LUX**



**SSI-601**  
**LED : 72**  
**INTENSITY : 1,75,000 LUX**



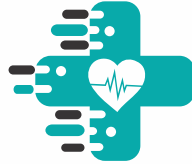
**SSI-501**  
**LED : 60**  
**INTENSITY : 1,50,000 LUX**



**SSI-401**  
**LED : 48**  
**INTENSITY : 1,25,000 LUX**

Due to continuous development and upgradation of the product, We reserved the right to make changes on product design, colour. All technical specification can vary upto +/-10%





**SUMIT SURGICAL**

ISO 9001,14001,18001 & CE Certified



**SSI-707**

#### TECHNICAL DATA

Intensity	2,00,000 x 2 Lux
Spot Diameter	100 - 150 mm
Depth Diameter	10 - 25 cm
Colour Temp	3800 - 4800 K
Colour Rendering Index	93 Ra
Focusing	Manual
LED Average Life	>50000 Hrs.
Numbers of LEDs	84 x 2
Diameter of Light	749mm (each)
Intensity Control	10~100 Digital Touch
Power Supply	220V/50Hz AC
Power Consumption	68 + 68 Watt
Special Function	Dual Memory Function

**Perfect Heat  
Dissipation**

**Capsense  
Technology**

**High Definition  
Optics**

**SSI-706**

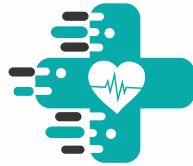
#### TECHNICAL DATA

Intensity	2,00,000 Lux
Satellite Intensity	1,75,000 Lux
Spot Diameter	100 - 150 mm
Depth Diameter	10 - 25 cm
Colour Temp	3800 - 4800 K
Colour Rendering Index	93 Ra
Focusing	Manual
LED Average Life	>50000 Hrs.
Numbers of LEDs	84 + 72
Diameter of Light	749mm (each)
Intensity Control	10~100 Digital Touch
Power Supply	220V/50Hz AC
Power Consumption	68 + 58 Watt
Special Function	Dual Memory Function



Due to continuous development and upgradation of the product, We reserved the right to make changes on product design, colour. All technical specification can vary upto +/-10%

[www.sumitsurgical.in](http://www.sumitsurgical.in)



**SUMIT SURGICAL**

ISO 9001,14001,18001 & CE Certified



**SSI-705**

#### TECHNICAL DATA

Intensity	2,00,000 Lux
Satellite Intensity	1,50,000 Lux
Spot Diameter	100 - 150 mm
Depth Diameter	10 - 25 cm
Colour Temp	3800 - 4800 K
Colour Rendering Index	93 Ra
Focusing	Manual
LED Average Life	>50000 Hrs.
Numbers of LEDs	84 + 60
Diameter of Light	749mm (each)
Intensity Control	10~100 Digital Touch
Power Supply	220V/50Hz AC
Power Consumption	68 + 48 Watt
Special Function	Dual Memory Function

**Perfect Heat  
Dissipation**

**Capsense  
Technology**

**High Definition  
Optics**

**SSI-704**

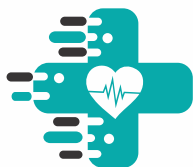


#### TECHNICAL DATA

Intensity	2,00,000 Lux
Satellite Intensity	1,25,000 Lux
Spot Diameter	100 - 150 mm
Depth Diameter	10 - 25 cm
Colour Temp	3800 - 4800 K
Colour Rendering Index	93 Ra
Focusing	Manual
LED Average Life	>50000 Hrs.
Numbers of LEDs	84 + 48
Diameter of Light	749mm (each)
Intensity Control	10~100 Digital Touch
Power Supply	220V/50Hz AC
Power Consumption	68 + 38 Watt
Special Function	Dual Memory Function

Due to continuous development and upgradation of the product, We reserved the right to make changes on product design, colour. All technical specification can vary upto +/-10%





## SUMIT SURGICAL

We are using our most advanced technology in OT Lamps i.e. Highest intensity, digital touch panel integrated with high definition optical system OT Lamp is a revolutionary product in surgical lighting division. The streamlined shape minimize disruption of laminar airflow in the operation theatre, and the light weight of the lamp enables easy setting of the lamp and its stable positioning.

### SSI-701



NATURAL LIGHT

PROTECTION GLASS

#### TECHNICAL DATA

Intensity	2,00,000 Lux
Spot Diameter	100 - 150 mm
Depth Diameter	10 - 25 cm
Colour Temp	3800 - 4800 K
Colour Rendering Index	93 Ra
Focusing	Manual
LED Average Life	>50000 Hrs.
Numbers of LEDs	84
Diameter of Light	749mm
Intensity Control	10~100 Digital Touch
Power Supply	220V/50Hz AC
Power Consumption	68 Watt
Special Function	Dual Memory Function



Capacitive Touch Panel

We are using our most advanced technology in OT Lamps i.e. Highest intensity, digital touch panel integrated with high definition optical system OT Lamp is a revolutionary product in surgical lighting division. The streamlined shape minimize disruption of laminar airflow in the operation theatre, and the light weight of the lamp enables easy setting of the lamp and its stable positioning.

### SSI-601



DUAL MEMORY

STERILIZABLE HANDLE

#### TECHNICAL DATA

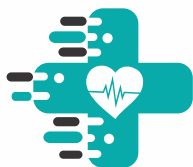
Intensity	1,75,000 Lux
Spot Diameter	100 - 150 mm
Depth Diameter	10 - 25 cm
Colour Temp	3800 - 4800 K
Colour Rendering Index	93 Ra
Focusing	Manual
LED Average Life	>50000 Hrs.
Numbers of LEDs	72
Diameter of Light	749mm
Intensity Control	10~100 Digital Touch
Power Supply	220V/50Hz AC
Power Consumption	58 Watt
Special Function	Dual Memory Function



Power Supply

Due to continuous development and upgradation of the product, We reserved the right to make changes on product design, colour. All technical specification can vary upto +/-10%

[www.sumitsurgical.in](http://www.sumitsurgical.in)



## SUMIT SURGICAL

We are using our most advanced technology in OT Lamps i.e. Highest intensity, digital touch panel integrated with high definition optical system OT Lamp is a revolutionary product in surgical lighting division. The streamlined shape minimize disruption of laminar airflow in the operation theatre, and the light weight of the lamp enables easy setting of the lamp and its stable positioning.

### SSI-501



HD OPTICS

VISUAL COMFORT

#### TECHNICAL DATA

Intensity	1,50,000 Lux
Spot Diameter	100 - 150 mm
Depth Diameter	10 - 25 cm
Colour Temp	3800 - 4800 K
Colour Rendering Index	93 Ra
Focusing	Manual
LED Average Life	>50000 Hrs.
Numbers of LEDs	60
Diameter of Light	749mm
Intensity Control	10~100 Digital Touch
Power Supply	220V/50Hz AC
Power Consumption	48 Watt
Special Function	Dual Memory Function



Remote

We are using our most advanced technology in OT Lamps i.e. Highest intensity, digital touch panel integrated with high definition optical system OT Lamp is a revolutionary product in surgical lighting division. The streamlined shape minimize disruption of laminar airflow in the operation theatre, and the light weight of the lamp enables easy setting of the lamp and its stable positioning.

### SSI-401



DUAL MEMORY

STERILIZABLE HANDLE

#### TECHNICAL DATA

Intensity	1,25,000 Lux
Spot Diameter	100 - 150 mm
Depth Diameter	10 - 25 cm
Colour Temp	3800 - 4800 K
Colour Rendering Index	93 Ra
Focusing	Manual
LED Average Life	>50000 Hrs.
Numbers of LEDs	48
Diameter of Light	749mm
Intensity Control	10~100 Digital Touch
Power Supply	220V/50Hz AC
Power Consumption	38 Watt
Special Function	Dual Memory Function



Camera Facility  
on third Arm  
(Optional)

Due to continuous development and upgradation of the product, We reserved the right to make changes on product design, colour. All technical specification can vary upto +/-10%



**SUMIT SURGICAL**

ISO 9001,14001,18001 & CE Certified

## Surgical Lamp With Wireless Camera and Monitor



Due to continuous development and upgradation of the product, We reserved the right to make changes on product design, colour. All technical specification can vary upto +/-10%

[www.sumitsurgical.in](http://www.sumitsurgical.in)



## SURGICAL LAMP



To meet the needs posted by modern surgery and each of its disciplines, we have developed innovative solutions. The homogeneous nature of SSI-621 increase surgeon comfort in every place, large the operative field.



**SSI-621  
LED'S-88  
INTENSITY- 170000 LUX**



**MONITOR ON  
THIRD ARM  
(OPTIONAL)**



**WIRELESS HD  
CAMERA  
(OPTIONAL)**



**SSI-321  
LED'S-57  
INTENSITY- 125000 LUX**

Due to continuous development and upgradation of the product, We reserved the right to make changes on product design, colour. All technical specification can vary upto +/-10%



**SUMIT SURGICAL**

ISO 9001,14001,18001 & CE Certified



**SSI-606**

#### TECHNICAL DATA

Intensity	1,70,000 X 2 Lux
Spot Diameter	100 - 150 mm
Depth Diameter	10 - 25 cm
Colour Temp	3800 - 4800 K
Colour Rendering Index	93 Ra
Focusing	Manual
LED Average Life	>50000 Hrs.
Numbers of LEDs	88 + 2
Diameter of Light	690mm (each)
Intensity Control	10~100 Digital Touch
Power Supply	220V/50Hz AC
Power Consumption	70 + 70 Watt
Special Function	Dual Memory Function

**Made With  
Aluminium**

**Manual  
Focus**

**Natural  
Light**

**SSI-603**

#### TECHNICAL DATA

Intensity	1,70,000 Lux
Satellite Intensity	1,25,000 Lux
Spot Diameter	100 - 150 mm
Depth Diameter	10 - 25 cm
Colour Temp	3800 - 4800 K
Colour Rendering Index	93 Ra
Focusing	Manual
LED Average Life	>50000 Hrs.
Numbers of LEDs	88 + 57
Diameter of Light	690mm (each)
Intensity Control	10~100 Digital Touch
Power Supply	220V/50Hz AC
Power Consumption	70 + 46 Watt
Special Function	Dual Memory Function



Due to continuous development and upgradation of the product, We reserved the right to make changes on product design, colour. All technical specification can vary upto +/-10%

[www.sumitsurgical.in](http://www.sumitsurgical.in)



## SUMIT SURGICAL

To meet the needs posted by modern surgery and each of its disciplines, we have developed innovative solutions. The homogeneous nature of SSI-621 increase surgeon comfort in every place, large the operative field.

### SSI-621



CREE LEDs (USA)

PROTECTION GLASS

#### TECHNICAL DATA

Intensity	1,70,000 Lux
Spot Diameter	100 - 150 mm
Depth Diameter	10 - 25 cm
Colour Temp	3800 - 4800 K
Colour Rendering Index	93 Ra
Focusing	Manual
LED Average Life	>50000 Hrs.
Numbers of LEDs	88
Diameter of Light	690mm
Intensity Control	10~100 Digital Touch
Power Supply	220V/50Hz AC
Power Consumption	70 Watt
Special Function	Dual Memory Function



Floor Model

### SSI-321

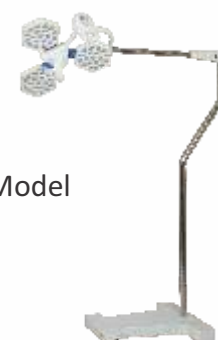


CREE LEDs

DUAL MEMORY

#### TECHNICAL DATA

Intensity	1,25,000 Lux
Spot Diameter	100 - 150 mm
Depth Diameter	10 - 25 cm
Colour Temp	3800 - 4800 K
Colour Rendering Index	93 Ra
Focusing	Manual
LED Average Life	>50000 Hrs.
Numbers of LEDs	57
Diameter of Light	690mm
Intensity Control	10~100 Digital Touch
Power Supply	220V/50Hz AC
Power Consumption	46 Watt
Special Function	Dual Memory Function



Floor Model

Due to continuous development and upgradation of the product, We reserved the right to make changes on product design, colour. All technical specification can vary upto +/-10%





**SUMIT SURGICAL**

**MADE FOR EXCELLENCE**



Due to continuous development and upgradation of the product, We reserved the right to make changes on product design, colour. All technical specification can vary upto +/-10%  
[www.sumitsurgical.in](http://www.sumitsurgical.in)

## SURGICAL LAMP



Ultra slim, unique shape & light weight Light head helps smooth and precise positions during surgery Comparing to other lights. These powerful lights provide impressive Intensity upto 160000 lux. Our lights are compatible with laminar flow System.



**SSI - 4(H)**  
**LED'S-52**  
**INTENSITY-1,60000 LUX**



**SSI - 3(H)**  
**LED'S-39**  
**INTENSITY-1,25000 LUX**

Due to continuous development and upgradation of the product, We reserved the right to make changes on product design, colour. All technical specification can vary upto +/-10%



**SUMIT SURGICAL**

ISO 9001,14001,18001 & CE Certified



**SSI-404(H)**

#### TECHNICAL DATA

Intensity	1 ,60,000 x 2 Lux
Spot Diameter	100 - 150 mm
Depth Diameter	10 - 25 cm
Colour Temp	3800 - 4800 K
Colour Rendering Index	93 Ra
Focusing	Manual
LED Average Life	>50000 Hrs.
Numbers of LEDs	52 x 2
Diameter of Light	690mm (each)
Intensity Control	10~100 Digital Touch
Power Supply	220V/50Hz AC
Power Consumption	42 + 42 Watt
Special Function	Dual Memory Function

**Dual Memory  
Function**

**Unique  
Design**

**With  
Remote**

**SSI-403(H)**

#### TECHNICAL DATA

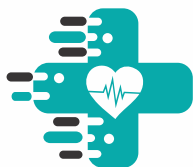
Intensity	1 ,60,000 Lux
Satellite Intensity	1,25,000 Lux
Spot Diameter	100 - 150 mm
Depth Diameter	10 - 25 cm
Colour Temp	3800 - 4800 K
Colour Rendering Index	93 Ra
Focusing	Manual
LED Average Life	>50000 Hrs.
Numbers of LEDs	52 + 39
Diameter of Light	690mm (each)
Intensity Control	10~100 Digital Touch
Power Supply	220V/50Hz AC
Power Consumption	42 + 32 Watt
Special Function	Dual Memory Function



Due to continuous development and upgradation of the product, We reserved the right to make changes on product design, colour. All technical specification can vary upto +/-10%

[www.sumitsurgical.in](http://www.sumitsurgical.in)





## SUMIT SURGICAL

Ultra slim, unique shape & light weight Light head helps smooth and precise positions during surgery Comparing to other lights. These powerful lights provide impressive Intensity upto 160000 lux. Our lights are compatible with laminar flow

### SSI-4(H)



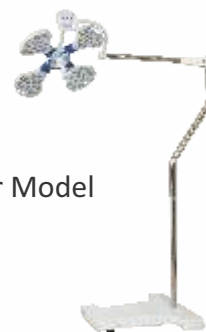
NATURAL LIGHT

STERILIZABLE HANDLE

#### TECHNICAL DATA

Intensity	1,60,000 Lux
Spot Diameter	100 - 150 mm
Depth Diameter	10 - 25 cm
Colour Temp	3800 - 4800 K
Colour Rendering Index	93 Ra
Focusing	Manual
LED Average Life	>50000 Hrs.
Numbers of LEDs	52
Diameter of Light	690mm
Intensity Control	10~100 Digital Touch
Power Supply	220V/50Hz AC
Power Consumption	42 Watt
Special Function	Dual Memory Function

Floor Model



Ultra slim, unique shape & light weight Light head helps smooth and precise positions during surgery Comparing to other lights. These powerful lights provide impressive Intensity upto 160000 lux. Our lights are compatible with laminar flow

### SSI-3(H)



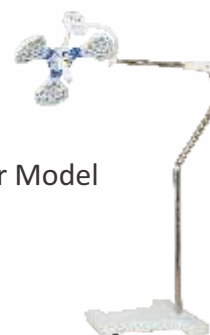
WITH REMOTE

HD OPTICS

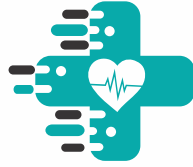
#### TECHNICAL DATA

Intensity	1,25,000 Lux
Spot Diameter	100 - 150 mm
Depth Diameter	10 - 25 cm
Colour Temp	3800 - 4800 K
Colour Rendering Index	93 Ra
Focusing	Manual
LED Average Life	>50000 Hrs.
Numbers of LEDs	39
Diameter of Light	690mm
Intensity Control	10~100 Digital Touch
Power Supply	220V/50Hz AC
Power Consumption	32 Watt
Special Function	Dual Memory Function

Floor Model



Due to continuous development and upgradation of the product, We reserved the right to make changes on product design, colour. All technical specification can vary upto +/-10%



**SUMIT SURGICAL**

ISO 9001,14001,18001 & CE Certified

## **WALL MOUNT - OT LAMPS**



**SSI-4 (H)**



**SSI-4 (P)**



**SSI-101 (R)**



**SSI-401 (R)**

## SURGICAL LAMP



Powerful LED Technology helps keeping a cool head through an almost in existent heat development in the surgeon's head area and wound field we design compact, effective and versle lamp Series. The lamp shape assures visual comfort and suitable laminar flow



**SSI-5(P)**  
**LED'S-55**  
**INTENSITY- 1,50,000 LUX**



**SSI-4(P)**  
**LED'S-44**  
**INTENSITY- 1,35,000 LUX**

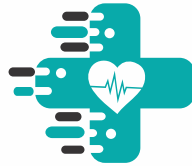


**SSI-3(P)**  
**LED'S-33**  
**INTENSITY- 1,10,000 LUX**

Due to continuous development and upgradation of the product, We reserved the right to make changes on product design, colour. All technical specification can vary upto +/-10%







**SUMIT SURGICAL**

ISO 9001,14001,18001 & CE Certified



**SSI-505(P)**

#### TECHNICAL DATA

Intensity	1,50,000 x 2 Lux
Spot Diameter	100 - 150 mm
Depth Diameter	10 - 25 cm
Colour Temp	3800 - 4800 K
Colour Rendering Index	93 Ra
Focusing	Manual
LED Average Life	>50000 Hrs.
Numbers of LEDs	55 x 2
Diameter of Light	690mm (each)
Intensity Control	10~100 Digital Touch
Power Supply	220V/50Hz AC
Power Consumption	44 + 44 Watt
Special Function	Dual Memory Function

**Capacitive  
Touch Panel**

**Protection  
Glass**

**Energy  
Efficient**

#### TECHNICAL DATA

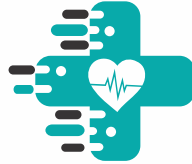
Intensity	1,50,000 Lux
Satellite Intensity	1,35,000 Lux
Spot Diameter	100 - 150 mm
Depth Diameter	10 - 25 cm
Colour Temp	3800 - 4800 K
Colour Rendering Index	93 Ra
Focusing	Manual
LED Average Life	>50000 Hrs.
Numbers of LEDs	55 + 44
Diameter of Light	690mm (each)
Intensity Control	10~100 Digital Touch
Power Supply	220V/50Hz AC
Power Consumption	44 + 36 Watt
Special Function	Dual Memory Function

**SSI-504(P)**



Due to continuous development and upgradation of the product, We reserved the right to make changes on product design, colour. All technical specification can vary upto +/-10%

[www.sumitsurgical.in](http://www.sumitsurgical.in)



**SUMIT SURGICAL**

ISO 9001,14001,18001 & CE Certified



**SSI-404(P)**

#### TECHNICAL DATA

Intensity	1 ,35,000 x 2 Lux
Spot Diameter	100 - 150 mm
Depth Diameter	10 - 25 cm
Colour Temp	3800 - 4800 K
Colour Rendering Index	93 Ra
Focusing	Manual
LED Average Life	>50000 Hrs.
Numbers of LEDs	44 x 2
Diameter of Light	690mm (each)
Intensity Control	10~100 Digital Touch
Power Supply	220V/50Hz AC
Power Consumption	36 + 36 Watt
Special Function	Dual Memory Function

**Capacitive  
Touch Panel**

**Protection  
Glass**

**Energy  
Efficient**



**SSI-403(P)**

#### TECHNICAL DATA

Intensity	1 ,35,000 Lux
Satellite Intensity	1,10,000 Lux
Spot Diameter	100 - 150 mm
Depth Diameter	10 - 25 cm
Colour Temp	3800 - 4800 K
Colour Rendering Index	93 Ra
Focusing	Manual
LED Average Life	>50000 Hrs.
Numbers of LEDs	44 + 33
Diameter of Light	690mm (each)
Intensity Control	10~100 Digital Touch
Power Supply	220V/50Hz AC
Power Consumption	36 + 26 Watt
Special Function	Dual Memory Function

Due to continuous development and upgradation of the product, We reserved the right to make changes on product design, colour. All technical specification can vary upto +/-10%



## SUMIT SURGICAL

Powerful LED Technology helps keeping a cool head through an almost in existent heat development in the surgeon's head area and wound field we design compact, effective and versatile lamp Series. The lamp shape assures visual comfort and suitable laminar flow

### SSI-5(P)



#### TECHNICAL DATA

Intensity	1,50,000 Lux
Spot Diameter	100 - 150 mm
Depth Diameter	10 - 25 cm
Colour Temp	3800 - 4800 K
Colour Rendering Index	93 Ra
Focusing	Manual
LED Average Life	>50000 Hrs.
Numbers of LEDs	55
Diameter of Light	690mm
Intensity Control	10~100 Digital Touch
Power Supply	220V/50Hz AC
Power Consumption	44 Watt
Special Function	Dual Memory Function



Floor Model

CREE LEDs

VISUAL COMFORT

Powerful LED Technology helps keeping a cool head through an almost in existent heat development in the surgeon's head area and wound field we design compact, effective and versatile lamp Series. The lamp shape assures visual comfort and suitable laminar flow

### SSI-4(P)



#### TECHNICAL DATA

Intensity	1,35,000 Lux
Spot Diameter	100 - 150 mm
Depth Diameter	10 - 25 cm
Colour Temp	3800 - 4800 K
Colour Rendering Index	93 Ra
Focusing	Manual
LED Average Life	>50000 Hrs.
Numbers of LEDs	44
Diameter of Light	660mm
Intensity Control	10~100 Digital Touch
Power Supply	220V/50Hz AC
Power Consumption	36 Watt
Special Function	Dual Memory Function



Floor Model

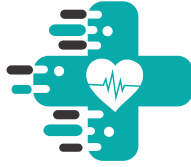
CREE LEDs

INNOVATIVE DESIGN

Due to continuous development and upgradation of the product, We reserved the right to make changes on product design, colour. All technical specification can vary upto +/-10%

[www.sumitsurgical.in](http://www.sumitsurgical.in)





## SUMIT SURGICAL

Powerful LED Technology helps keeping a cool head through an almost in existent heat development in the surgeon's head area and wound field we design compact, effective and versatile lamp Series. The lamp shape assures visual comfort and suitable laminar flow

### SSI-3(P)



CREE LEDs

WITH REMOTE

#### TECHNICAL DATA

Intensity	1,10,000 Lux
Spot Diameter	100 - 150 mm
Depth Diameter	10 - 25 cm
Colour Temp	3800 - 4800 K
Colour Rendering Index	93 Ra
Focusing	Manual
LED Average Life	>50000 Hrs.
Numbers of LEDs	33
Diameter of Light	690mm
Intensity Control	10~100 Digital Touch
Power Supply	220V/50Hz AC
Power Consumption	26 Watt
Special Function	Dual Memory Function



Floor Model

Due to continuous development and upgradation of the product, We reserved the right to make changes on product design, colour. All technical specification can vary upto +/-10%





**QUALITY - SERVICE - INTEGRITY**





## SURGICAL LAMP



Impressive lighting levels & ingenious Design make us perfect partner for surgical procedures. Maintenance free OT light to ensure that surgeon can concentrate on the Demanding intervention.



**SSI-501 (R)**  
**LED'S-60**  
**INTENSITY- 1,65,000 LUX**



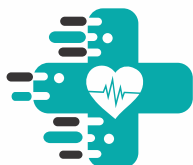
**SSI-401 (R)**  
**LED'S-48**  
**INTENSITY- 1,50,000 LUX**



**SSI-301 (R)**  
**LED'S-36**  
**INTENSITY- 1,20,000 LUX**

Due to continuous development and upgradation of the product, We reserved the right to make changes on product design, colour. All technical specification can vary upto +/-10%





**SUMIT SURGICAL**

ISO 9001,14001,18001 & CE Certified



**SSI-505 (R)**

#### TECHNICAL DATA

Intensity	1 ,65,000 x 2 Lux
Spot Diameter	100 - 150 mm
Depth Diameter	10 - 25 cm
Colour Temp	3800 - 4800 K
Colour Rendering Index	93 Ra
Focusing	Manual
LED Average Life	>50000 Hrs.
Numbers of LEDs	60 x 2
Diameter of Light	690mm (each)
Intensity Control	10~100 Digital Touch
Power Supply	220V/50Hz AC
Power Consumption	48 + 48 Watt
Special Function	Dual Memory Function

**Capacitive  
Touch Panel**

**Protection  
Glass**

**Energy  
Efficient**

**SSI-504 (R)**



#### TECHNICAL DATA

Intensity	1 ,65,000 Lux
Satellite Intensity	1,50,000 Lux
Spot Diameter	100 - 150 mm
Depth Diameter	10 - 25 cm
Colour Temp	3800 - 4800 K
Colour Rendering Index	93 Ra
Focusing	Manual
LED Average Life	>50000 Hrs.
Numbers of LEDs	60 + 48
Diameter of Light	600mm (each)
Intensity Control	10~100 Digital Touch
Power Supply	220V/50Hz AC
Power Consumption	48 + 38 Watt
Special Function	Dual Memory Function

Due to continuous development and upgradation of the product, We reserved the right to make changes on product design, colour. All technical specification can vary upto +/-10%

[www.sumitsurgical.in](http://www.sumitsurgical.in)



**SUMIT SURGICAL**

ISO 9001,14001,18001 & CE Certified



**SSI-404 (R)**

#### TECHNICAL DATA

Intensity	1,50,000 x 2 Lux
Spot Diameter	100 - 150 mm
Depth Diameter	10 - 25 cm
Colour Temp	3800 - 4800 K
Colour Rendering Index	93 Ra
Focusing	Manual
LED Average Life	>50000 Hrs.
Numbers of LEDs	48 x 2
Diameter of Light	690mm (each)
Intensity Control	10~100 Digital Touch
Power Supply	220V/50Hz AC
Power Consumption	38 + 38 Watt
Special Function	Dual Memory Function

**Capacitive  
Touch Panel**

**Protection  
Glass**

**Energy  
Efficient**



**SSI-403 (R)**

#### TECHNICAL DATA

Intensity	1,50,000 Lux
Satellite Intensity	1,20,000 Lux
Spot Diameter	100 - 150 mm
Depth Diameter	10 - 25 cm
Colour Temp	3800 - 4800 K
Colour Rendering Index	93 Ra
Focusing	Manual
LED Average Life	>50000 Hrs.
Numbers of LEDs	48 + 36
Diameter of Light	690mm (each)
Intensity Control	10~100 Digital Touch
Power Supply	220V/50Hz AC
Power Consumption	38 + 28 Watt
Special Function	Dual Memory Function

Due to continuous development and upgradation of the product, We reserved the right to make changes on product design, colour. All technical specification can vary upto +/-10%



## SUMIT SURGICAL

Impressive lighting levels & ingenious Design make us perfect partner for surgical procedures Maintenance - free OT light to ensure that surgeon can concentrate on the Demanding intervention.

### SSI-5 (R)



#### TOUCH CONTROL PANEL

#### BATTERY BACKUP (OPTIONAL)

#### TECHNICAL DATA

Intensity	1,65,000 Lux
Spot Diameter	100 - 150 mm
Depth Diameter	10 - 25 cm
Colour Temp	3800 - 4800 K
Colour Rendering Index	93 Ra
Focusing	Manual
LED Average Life	>50000 Hrs.
Numbers of LEDs	60
Diameter of Light	690mm
Intensity Control	10~100 Digital Touch
Power Supply	220V/50Hz AC
Power Consumption	48 Watt
Special Function	Dual Memory Function



Floor Model

### SSI-4 (R)



#### VERSATILE DESIGN

#### PROTECTION GLASS

#### TECHNICAL DATA

Intensity	1,50,000 Lux
Spot Diameter	100 - 150 mm
Depth Diameter	10 - 25 cm
Colour Temp	3800 - 4800 K
Colour Rendering Index	93 Ra
Focusing	Manual
LED Average Life	>50000 Hrs.
Numbers of LEDs	48
Diameter of Light	690mm
Intensity Control	10~100 Digital Touch
Power Supply	220V/50Hz AC
Power Consumption	38 Watt
Special Function	Dual Memory Function



Floor Model

Due to continuous development and upgradation of the product, We reserved the right to make changes on product design, colour. All technical specification can vary upto +/-10%

[www.sumitsurgical.in](http://www.sumitsurgical.in)





**SUMIT SURGICAL**

Impressive lighting levels & ingenious Design make us perfect partner for surgical procedures Maintenance - free OT light to ensure that surgeon can concentrate on the Demanding intervention.

## SSI-3 (R)



**NATURAL LIGHT**

**PROTECTION GLASS**

### TECHNICAL DATA

Intensity	1,20,000 Lux
Spot Diameter	100 - 150 mm
Depth Diameter	10 - 25 cm
Colour Temp	3800 - 4800 K
Colour Rendering Index	93 Ra
Focusing	Manual
LED Average Life	>50000 Hrs.
Numbers of LEDs	36
Diameter of Light	690mm
Intensity Control	10~100 Digital Touch
Power Supply	220V/50Hz AC
Power Consumption	28 Watt
Special Function	Dual Memory Function



Floor Model

Due to continuous development and upgradation of the product, We reserved the right to make changes on product design, colour. All technical specification can vary upto +/-10%

**Change The Vision  
To Save Your Eyes**



# SUMIT SURGICAL

ISO 9001,14001,18001 & CE Certified

## EXAMINATION LIGHTS



### SSI-101(M)

#### TECHNICAL DATA

Intensity	50,000 Lux
Spot Diameter	100 - 150 mm
Depth Diameter	10 - 25 cm
Colour Temp	3800 - 4800 K
Colour Rendering Index	93 Ra
Focusing	Fix Focusing
LED Average Life	>50000 Hrs.
Numbers of LEDs	12
Diameter of Light	175mm
Intensity Control	10~100 Digital Touch
Power Supply	220V/50Hz AC
Power Consumption	10 Watt

**SUMIT SURGICAL** has developed new models of examination lights for minor surgery along with white & yellow LED combination. Unique & better quality portable stand for our valued customers. The floor model can easily be moved around the room to clear up space whenever needed.



Battery backup (Optional)



### SSI-109(M)

#### TECHNICAL DATA

Intensity	30,000 Lux
Spot Diameter	100 - 150 mm
Depth Diameter	10 - 25 cm
Colour Temp	3800 - 4800 K
Colour Rendering Index	93 Ra
Focusing	Fix Focusing
LED Average Life	>50000 Hrs.
Numbers of LEDs	09
Diameter of Light	150mm
Intensity Control	10~100 Digital Touch
Power Supply	220V/50Hz AC
Power Consumption	7 Watt

Due to continuous development and upgradation of the product, We reserved the right to make changes on product design, colour. All technical specification can vary upto +/-10%

[www.sumitsurgical.in](http://www.sumitsurgical.in)

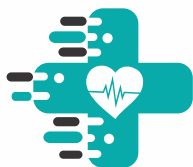




## Thoughtfully Designed For Operating Convenience & Comfort

Due to continuous development and upgradation of the product, We reserved the right to make changes on product design, colour. All technical specification can vary upto +/-10%

[www.sumitsurgical.in](http://www.sumitsurgical.in)



**SUMIT SURGICAL**

ISO 9001,14001,18001 & CE Certified

## HYDRAULIC O.T TABLE (ECOMED) SSI-500(H)



**SSI-500(H)**

### FEATURES

- Hydraulic and Mechanical Operated.
- Centric base made from high quality stainless steel.
- Leg & Head section are interchangeable.
- Centric pillars, Stainless fitting.
- Detachable head, leg and pelvic section.
- Inbuilt kidney bridge.
- Base and cover made of attractive, easy to clean stainless steel.
- Sophisticated mechanics provide smooth, stepless articulation of the table top for precise patient positioning

### TECHNICAL DATA

Top Dimension	L 1900 mm x W 520 mm
Height Adjustment	780 mm -1080 mm
Trendelenburg / Reverse	30° / 25°
Lateral Tilt	20° / 24°
Kidney Elevator	125 mm
Back Rest ( up / down )	80° / 25°
Leg Rest ( up / down )	15° / 90°
Head Rest ( up / down )	20° / 60°
Patient Weight Capacity	150 Kgs



Due to continuous development and upgradation of the product, We reserved the right to make changes on product design, colour. All technical specification can vary upto +/-10%



**SUMIT SURGICAL**

ISO 9001,14001,18001 & CE Certified

## **HYDRAULIC O.T TABLE SSI-600(H)**



### **SSI-600(H)**

**HEAVY BASE TABLE**

**CONCEALED PUMP**

### **FEATURES**

- Table top is made with stainless steel grade 304 to avoid rust with concealed pump.
- The five section Stainless Steel table top is equipped with removable, antistatic mattresses.
- All the positions are realized by a mechanical driver
- The table is furnished with hard, robust stainless steel shell which provides the sense of dirt free & sanitized operations.
- Precision made hydraulic system with a single lever action hydraulic lift controlled by a foot pedal.
- Five section stainless steel top gives anatomic adaptation to the patient body.
- Inbuilt Kidney Bridge and large perinea cut out for drainage.
- Manual floor locking system.

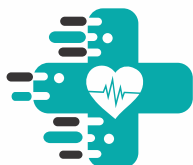
### **TECHNICAL DATA**

Top Dimension	L 1900 mm x W 520 mm
Height Adjustment	762 mm -1000 mm
Trendelenburg / Reverse	30° / 25°
Lateral Tilt	20° / 20°
Kidney Elevator	150 mm
Back Rest ( up / down )	80° / 25°
Leg Rest ( up / down )	15° / 90°
Head Rest ( up / down )	20° / 60°
Patient Weight Capacity	200 Kgs

Due to continuous development and upgradation of the product, We reserved the right to make changes on product design, colour. All technical specification can vary upto +/-10%

[www.sumitsurgical.in](http://www.sumitsurgical.in)





**SUMIT SURGICAL**

ISO 9001,14001,18001 & CE Certified

## **HYDRAULIC O.T TABLE ( C-ARM COMPATIBLE SSI-800(H)**



### **SSI-800(H)**

**HEAVY BASE TABLE**

**CONCEALED PUMP**

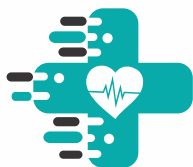
### **FEATURES**

- Hydraulic and Mechanical Operated.
- The base is eccentric for trouble-free C-ARM movements.
- Leg & Head section are interchangeable.
- Eccentric pillars, Stainless fitting.
- Detachable head, leg and pelvic section.
- Inbuilt kidney bridge.
- Five sectional radio-translucent.
- Base and cover made of attractive, easy to clean stainless steel.
- Sophisticated mechanics provide smooth, stepless articulation of the table top for precise patient positioning

### **TECHNICAL DATA**

Top Dimension	L 1900 mm x W 520 mm
Height Adjustment	762 mm -1000 mm
Trendelenburg / Reverse	30° / 25°
Lateral Tilt	24° / 24°
Kidney Elevator	140 mm
Back Rest ( up / down )	80° / 25°
Leg Rest ( up / down )	15° / 90°
Head Rest ( up / down )	20° / 60°
Patient Weight Capacity	200 Kgs

Due to continuous development and upgradation of the product, We reserved the right to make changes on product design, colour. All technical specification can vary upto +/-10%



**SUMIT SURGICAL**

ISO 9001,14001,18001 & CE Certified

## **ELECTRIC O.T TABLE SSI-1000(E)**



### **SSI-1000(E)**

#### **FEATURES**

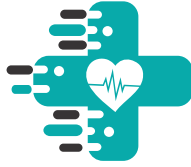
- Fully electrically operated table, five sections, radiotranslucent table top with eccentric pillars and Die Compressed base.
- Interchangeable head and leg sections (manually).
- All positions operated through cable remote.
- Inbuilt kidney bridge.
- Auto leveling (zero function).
- Indication of Battery Back provided in the hand set.

#### **TECHNICAL DATA**

Top Dimension	L 1900 mm x W 520 mm
Height Adjustment	750 mm -1000 mm
Trendelenburg / Reverse	30° / 25°
Lateral Tilt	20° / 20°
Kidney Elevator	130 mm
Back Rest ( up / down )	80° / 25°
Leg Rest ( up / down )	15° / 90°
Head Rest ( up / down )	20° / 60°
Power Supply	24 V DC
Battery Backup	2-3 Hours (Optional)
Mains Voltage Capacity	AC 220V+10%50Hz
Patient Weight Capacity	200 Kgs

Due to continuous development and upgradation of the product, We reserved the right to make changes on product design, colour. All technical specification can vary upto +/-10%

[www.sumitsurgical.in](http://www.sumitsurgical.in)



**SUMIT SURGICAL**

ISO 9001,14001,18001 & CE Certified

## **ADVANCED ELECTRIC O.T TABLE SSI-1500(E)**



### **SSI-1500(E)**

- SS-304
- Surgeons Panel
- Electric ( Remote Operated)
- C-Arm Compatible
- Floor Locking (Optional)
- Zero Positioning
- Top Slide (Optional)

### **FEATURES**

- Fully electrically operated table, five sections, radio -translucent table top with eccentric pillars and Die Compressed base.
- Interchangeable head and leg sections (manually).
- All positions operated through cable remote.
- Electric floor locking. (Optional)
- Inbuilt kidney bridge.
- Auto leveling (zero function).
- We are providing two Handsets. Additional fixed control panel provided on the table top, which can be used in case of failure of main hand set.
- Indication of Battery Back provided in the hand set.
- Handset is providing Dual Memory function which can be set and reset.

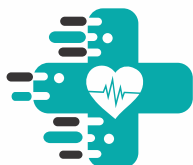


### **TECHNICAL DATA**

Top Dimension	L 1900 mm x W 522 mm
Height Adjustment	750 mm -1000 mm
Trendelenburg / Reverse	30° / 25°
Lateral Tilt	20° / 20°
Kidney Elevator	130 mm
Back Rest ( up / down )	60° / 25°
Leg Rest ( up / down )	15° / 90°
Head Rest ( up / down )	20° / 60°
Power Supply	24 V DC
Battery Backup	2-3 Hours (Optional)
Mains Voltage Capacity	AC 220V+10%50Hz

Due to continuous development and upgradation of the product, We reserved the right to make changes on product design, colour. All technical specification can vary upto +/-10%





**SUMIT SURGICAL**

ISO 9001,14001,18001 & CE Certified

## **OPHTHALMIC O.T TABLE SSI-1800(E)**



**SSI-1800(E)**



### **FEATURES**

- Ophthalmic OT Table has a maximum height of 920 mm and minimum height of 690 mm.
- Ideal for standing table or sitting working position.
- It is an ideal operating table with the advantages of strong applicability, easy to operate.
- Adjusts conveniently and steady performance.
- Its ergonomic design ensures both surgeon and patient comfort.
- Patient comfort is assured with deep antistatic cushions which are easy to clean.
- The adjustable cushioned head-rest ensures doctor comfort and resistant during operations.

### **TECHNICAL DATA**

Top Dimension	L 1900 mm x W 522 mm
Net Weight	120 Kgs
Minimum Height	690 mm
Maximum Height	920 mm
Stroke Length	230 mm
Patient Weight Capacity	150 Kg
Back Rest Selection	20" (Head Side)
Leg Section	30"

Due to continuous development and upgradation of the product, We reserved the right to make changes on product design, colour. All technical specification can vary upto +/-10%

[www.sumitsurgical.in](http://www.sumitsurgical.in)



**SUMIT SURGICAL**

ISO 9001,14001,18001 & CE Certified

## **ELECTRO HYDRAULIC O.T TABLE SSI-2100(HE)**



### **SSI-2100(HE)**

#### **FEATURES**

- Five section table top with divided foot section.
- Table top is constructed from a high-pressure laminate to permit x-ray penetration and fluoroscopy.
- All table positioning i.e. height, back section, lateral tilt, trendelenburg and anti-trendelenburg, operated by remote.
- The casings on the frame and centre supporting column should be made of hygienic stainless steel and should have built in elevator for
- kidney and chest bridge.
- Table Top is made from radiolucent material.



#### **TECHNICAL DATA**

Top Dimension	L 1900 mm x W 520 mm
Height Adjustment	650 mm -1050 mm
Trendelenburg / Reverse	30° / 25°
Lateral Tilt	20° / 20°
Kidney Elevator	130 mm
Back Rest ( up / down )	60° / 25°
Leg Rest ( up / down )	15° / 90°
Head Rest ( up / down )	20° / 60°
Power Supply	24 V DC
Battery Backup	2-3 Hours (Optional)
Mains Voltage Capacity	AC 220V+10%50Hz
Patient Weight Capacity	200 Kgs

Due to continuous development and upgradation of the product, We reserved the right to make changes on product design, colour. All technical specification can vary upto +/-10%



**SUMIT SURGICAL**

ISO 9001,14001,18001 & CE Certified

## **OBSTETRIC GYNE TABLE SSI-700(GH)**



### **SSI-700(GH)**



### **FEATURES**

In terms of quality, reliability and functionality Operating Table is being acknowledged as the ideal solution for Gynecology and Obstetrics. Due to its modular design, can be flexibly adapted to your needs and configured to suit your exact surgical requirements. SSI-700G-H is Hydraulic operation table for gynecology and obstetrics. With full affinity profile. Pink color is available for the mattress. It overcomes the slow speed of similar products.

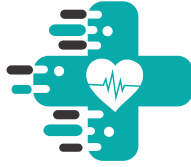
#### **TECHNICAL DATA**

Top Dimension	L 1900 mm x W 522 mm
Height Adjustment	770 mm -1020 mm
Seat Plate ( down / up)	8° / 15°
Back Plate ( down / up)	78° / 4°
Patient weight Capacity	200 Kgs.
Trendelenburg	18° / 18°

Due to continuous development and upgradation of the product, We reserved the right to make changes on product design, colour. All technical specification can vary upto +/-10%

[www.sumitsurgical.in](http://www.sumitsurgical.in)





**SUMIT SURGICAL**

ISO 9001,14001,18001 & CE Certified

## **NEURO ATTACHMENT**



**Horse Shoe Positions**



**Sujita Head Fixator & Skull Pins**



**Fixator for Sitting Positions**

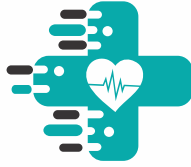


**3 Pin Skull Fixator**



**Horse Shoe**

Due to continuous development and upgradation of the product, We reserved the right to make changes on product design, colour. All technical specification can vary upto +/-10%



**SUMIT SURGICAL**

ISO 9001,14001,18001 & CE Certified

## **ORTHO TRACTION ATTACHMENT**



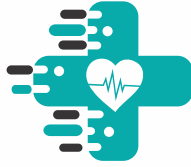
**Albee Type Ortho Attachment**



**Hanging Ortho Attachment**

Due to continuous development and upgradation of the product, We reserved the right to make changes on product design, colour. All technical specification can vary upto +/-10%

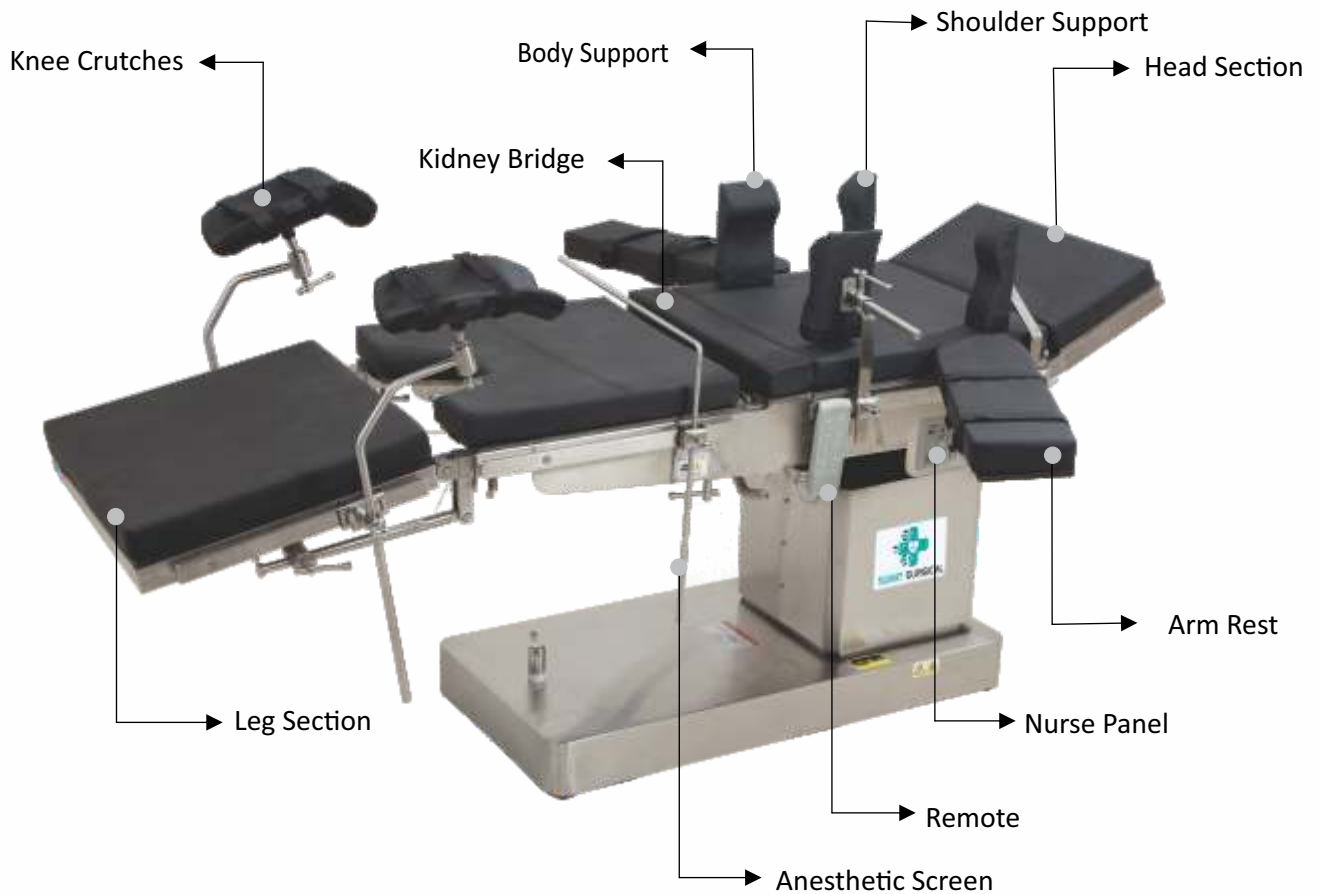
[www.sumitsurgical.in](http://www.sumitsurgical.in)



**SUMIT SURGICAL**

ISO 9001,14001,18001 & CE Certified

## ACCESSORIES



Mattress



Anesthetic Screen



Remote Control



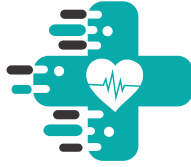
Nurse Panel



Kidney Bridge

Due to continuous development and upgradation of the product, We reserved the right to make changes on product design, colour. All technical specification can vary upto +/-10%

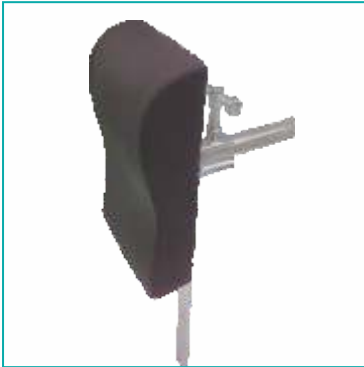




**SUMIT SURGICAL**

ISO 9001,14001,18001 & CE Certified

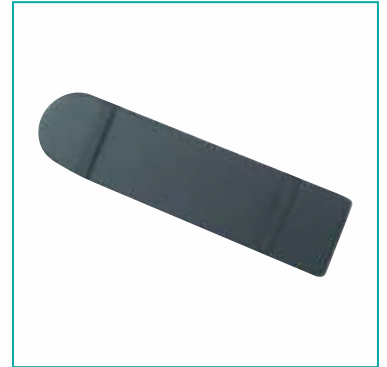
## ACCESSORIES



**Body Support**



**Crutches Holder Steel Clamp**



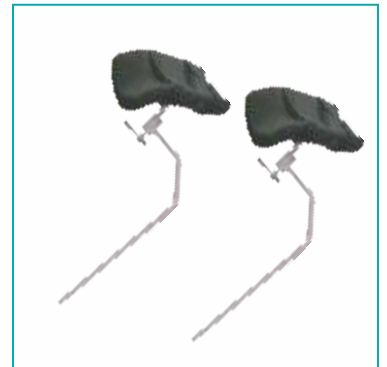
**Arm Rest**



**Shoulder Support**

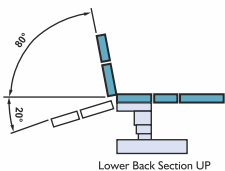
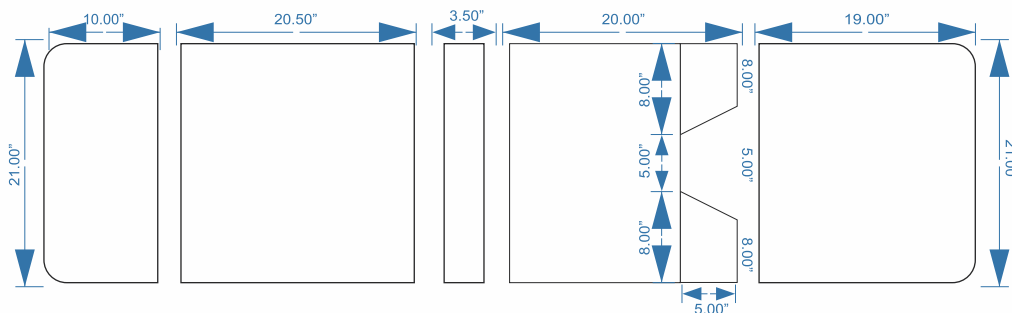


**Finger Grip**

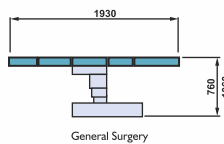


**Lithotomy Crutches**

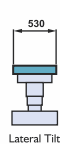
## ELECTRIC TABLE C-ARM (MEASUREMENT)



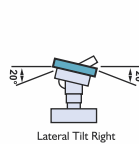
Lower Back Section UP



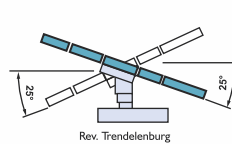
General Surgery



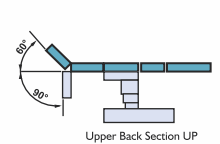
Lateral Tilt



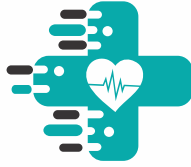
Lateral Tilt Right



Rev. Trendelenburg



Upper Back Section UP



**SUMIT SURGICAL**

ISO 9001,14001,18001 & CE Certified

## **TABLE POSITIONS**



**Finger Grip**



**Flex Position**



**ENT Operation Position**



**Gyne Position**

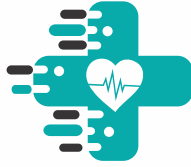


**Lateral Arm Support**



**Reflex Position**

Due to continuous development and upgradation of the product, We reserved the right to make changes on product design, colour. All technical specification can vary upto +/-10%



**SUMIT SURGICAL**

ISO 9001,14001,18001 & CE Certified

## TABLE POSITIONS



**Trendelenburg**



**Reverse Trendelenburg**



**Left Tilt**



**Right Tilt**

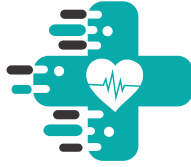


**Kidney Bridge**



**Anorectum Operation Position**





**SUMIT SURGICAL**

ISO 9001,14001,18001 & CE Certified

## PATIENT MONITORS



### **CMS-8000**

#### **Technical Specification**

- High resolution 12.1" color TFT display
- Lightweight, compact and portable
- ECG, SpO2, NIBP, 2-TEMP, PR
- Optional: 2-IBP, ETCO2, and thermal printer
- Built-in rechargeable lithium battery
- ECG waveforms of 7-leads display on the same screen
- 72-hours graphic and tabular trends of all parameters
- 72 alarm events of all parameters recall

**5 Para Patient Monitor**

**ECG, Spo2, NIBP, TEMP, RESP, PR**



### **SSI-8500**

#### **Technical Specification**

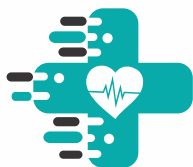
- 12.1" color TFT LCD screen with multi channel waveforms display
- Rechargeable Lithium high energy built in Battery
- Easy to learn, easy to use, simplified menus and dedicated functions keys
- Easy connection with central monitoring system
- 96 hours data storage
- Suitable for adult, pediatrics and neonates

**5 Para Patient Monitor**

**ECG, Spo2, NIBP, TEMP, RESP, PR**

**12.1" Color TFT LCD Display**

Due to continuous development and upgradation of the product, We reserved the right to make changes on product design, colour. All technical specification can vary upto +/-10%



**SUMIT SURGICAL**

ISO 9001,14001,18001 & CE Certified

## PULSE OXIMETER

### **CMS-5100**

#### **Technical Specification**



- Be applicable for adult, pediatric and neonatal for all-round monitoring, easy operation and high cost performance.
- Be applicable for medicine, surgery, operating room, ICU/CCU, emergency room, obstetrics and gynecology, pediatrics.
- Built-in rechargeable Li-polymer battery for uninterrupted monitoring.
- Compact and flexible appearance, easy for carrying and be suitable for indoor and outdoor (in ambulance) monitoring.
- With user-friendly interface.
- Display with 2.8" (320x240) color TFT LCD and red and yellow highlight LED.
- Visual and audible alarm for Systolic Pressure (SYS), Diastolic Pressure(DIA), Mean Pressure(MAP), SpO2 and Pulse rate(PR),and upper and lower limit of alarm can be set.
- Unique Flash memory, storage for up to 2000 NIBP data and 78000 SpO2 data.
- Convenient and quick in inquiring measurement data, review for NIBP trend graph within 24-hour and SpO2 and Pulse rate(PR) trend graph within 20-hour. Request Callback.

**SPO2**

**NIBP**



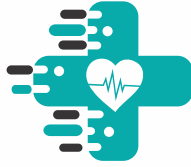
### **SSI-7200**

#### **Technical Specification**

- 7" Color TFT display
- Standard configuration: NIBP, SPO2
- Maximum 720 hour graphic and tabular trends
- Maximum 12 hours of all waveforms
- Support USB data output
- Unique human voice alarm
- SPO2: Measure Range:0-100% Resolution: 1%
- Pulse Rate:20-250BPM
- NIBP: Work mode: Manual, Automatic, Continuous
- Accuracy:±5mmHg

**NIBP & SPO2**

**7" Color TFT LCD Display**



**SUMIT SURGICAL**

ISO 9001,14001,18001 & CE Certified

## **PHOTOTHERAPY**

### **Product Description**

High radiation LED Phototherapy consist blue LED light source designed for the treatment of indirect hyperbilirubinaemia in new born.

### **LED Phototherapy stand**

- Easy to operate.
- Low power consumption (12 W) compared to any conventional phototherapy system (120 W).
- LED's emitting blue light in 450-470 nm. Spectrum matching peak absorption wavelength (458 nm.) at which bilirubin is broken down.
- Do not emit light in infrared radiation range reduction the risk of fluid loss.
- Long life > 20,000 hrs.
- Negligible Maintenance cost.
- Intensity: > 25  $\mu\text{W} / \text{cm}^2 / \text{nm}$ .
- Heavy duty mobile stand with height adjustment facility & easy swivelling box when stand is to be used in conjunction with radiant warmer or infant trolley
- No need to Cover eyes of the baby
- Mounted on castors for easy mobility
- M. S. Fabrication with powder coated paint.
- Time Totalizer (Optional).
- Operation Voltage : 100-250V A C, 50Hz.

### **Contact Phototherapy**

- Compact, Portable & Easy to Carry.
- Detachable Baby Tray for Cleaning.
- No need to Cover eyes of the baby
- Low Power consumption (12 W).
- LED's emitting blue light in 450-470 nm. Spectrum matching peak absorption wavelength (458 nm.) at which bilirubin is broken down
- Do not emit light in infrared radiation range reduction the risk of fluid loss.
- Long life > 20,000 hrs.
- Irradiance: > 25  $\mu\text{W} / \text{cm}^2 / \text{nm}$ .
- Can be used separately in mother bed / in trolley
- M. S. Fabrication with powder coated paint .
- Time Totalizer (Optional).
- Operation Voltage : 100-250V A C, 50Hz



Due to continuous development and upgradation of the product, We reserved the right to make changes on product design, colour. All technical specification can vary upto +/-10%





**SUMIT SURGICAL**

ISO 9001,14001,18001 & CE Certified

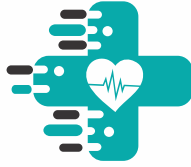
## **O.T. PENDANT (MOTORISED)**



### **SSI-P20**

#### **Description**

- The activity range of Horizontal arm radius 1000mm, horizontal arm and functional box can be simultaneously rotated, each horizontal rotation angle 340°.
- Functional box vertical lifting stroke 250 ~ 600mm. Motor power 100W.
- The rotary joint has oxygen balloon expandable isolation brakes, just hold down the brake button on the device to easily rotate, release the button to secure the device no drift.
- The gas terminal interface standard configuration: oxygen 2pcs, suction 2pcs;
  - i.) Different colors and shapes,
  - ii.) more than 20,000 times mating cycles;
  - iii.) using the secondary seal, with three states (on, off, pull), can carry air service;
- Instrument platform: two layers (height adjustable); rounded bumper design, each platform can load 20kg;
- Weight loading: 150kg;
- Power supply: AC220V, 50HZ; AC110V, 60HZ
- Electrical outlet: 8 pcs (220V / 10A);
- Potential ground terminal: 2pcs;
- The network interface: RJ45 1pc;
- Drawer: 1pc;
- Syringe pump rack 1pc, infusion pump rack 1pc;
- The main material: high- strength aluminium alloy;
- The surface treatment using imported high-voltage electrostatic powder spray;



**SUMIT SURGICAL**

ISO 9001,14001,18001 & CE Certified

## AIR COMPRESSOR



### ELECTRONIC AIR DRYING SYSTEM

#### TECHNICAL DATA

Voltage And Frequency	220 VAC+/-50/60 Hz
Compressor Efficiency	55 l.min- 1/3, 5 bar
Air tank capacity	2 Lit.
Peak flow at Pressure 3 Bar	200 l. min-1/3 bar
Filtration of air	5 µm
Motor	Thomas
Dew point depression at 40 Lit. min-1,20°	C5°C under the ambient temperature
Auto lock	Diss1160-A(3/4"-16 NUF)
Mode of the operation	Continuous
Automatic back-up to central pipeline	On request
Noise Level	≤ 49 dB [A]

## Product Description

Owing to our experience of this domain, we provide the finest quality of Air Compressor Ideal air source for various kinds of ventilators, Used for delivery of clean and dry compressed air in the ventilators, the air compressor is known for dehydration design.

## Features

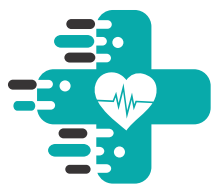
- Multi-level filtration
- Adopting highly efficient oil-free compressor core

## Other Details

- A compact medical grade air compressor intended for the delivery of clean and dry compressed air
  - Adopting highly efficient oil-free compressor core and multi level filtration and dehydration design.
  - Our compressors are compatible with all the ventilators (external air source) and are very inexpensive.
- Our compressors have been running successfully with all the leading brands of ventilators like Macquet, Drager, Covedian, Viasys, Siemens, Bird, Purittan Bennett, Takaoka, SLE etc.

Due to continuous development and upgradation of the product, We reserved the right to make changes on product design, colour. All technical specification can vary upto +/-10%





**SUMIT SURGICAL**

**Sumit Surgical Industries**

**Contact**

24x7@

+91-11-27762484

+91-9868165949, +91+9210333574

Address : J-37, Sec-4, DSIIIDC Indl. Area, Bawana, New Delhi 110039.

Email : [info.sumitsurgical@gmail.com](mailto:info.sumitsurgical@gmail.com)

Web : [www.sumitsurgical.in](http://www.sumitsurgical.in)



Note: Due to continuous development and upgradation of the product, we reserve the right to make changes on product design, colour & specifications without prior notice